

KINTEK®

COMPONENTI INNOVATIVI TECNOMECCANICI

TECHNIQUE AND EXPERIENCE IN REALIZING SPECIAL ITEMS
on demand

KINTEK OFFER

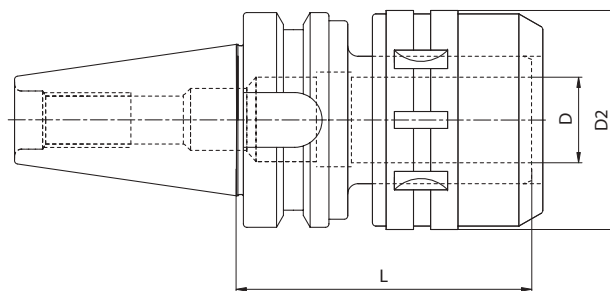
MILLING AND DRILL CHUCKS



VALIDITY
from **15/06/2020**
to **31/12/2020**

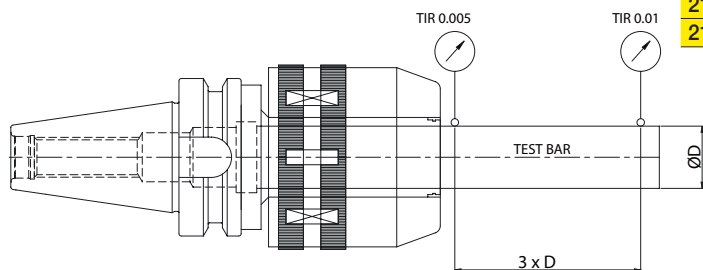
MILLING CHUCK MANDRINI A FORTE SERRAGGIO
 KRAFTSPANNFUTTER MANDRINS A FORT SERRAGE
 УСИЛЕННЫЕ ОПРАВКИ 铣夹头

JIS-B 6339 MAS 403/BT AD



SUPPLIED WITH WRENCH • FORNITI CON CHIAVE INCLUSA
 INKLUSIVE SPANNSCHLÜSSEL • CLÉ INCLUSE
 ПОСТАВЛЯЕТСЯ С КЛЮЧОМ • 供货时提供扳手

CODE N.	PRICE	DESCRIPTION	ISO	D	D2	L	G6,3 12000 RPM
214-01508	100,00	BT40H80C20	40	20	53	90	•
214-01501	102,00	BT40H105C20	40	20	53	100	•
214-01502	111,00	BT40H105C32	40	32	68	105	•
214-01504	120,00	BT50H105C20	50	20	53	105	•
214-01505	132,00	BT50H105C32	50	32	68	105	•
214-01506	152,00	BT50H135C32	50	32	68	135	•



MILLING CHUCK (diameter)	SPECIFICATION (DIN)	TOLERANCE (Taper shank)	RUN-OUT (3xD)	CLAMPING TORQUE
C20	AT3	BT40 (0~+0,003)	0~0,01	980M.m (100 Kgf.m)
C32		BT50 (0~+0,004)		3430M.m (350 Kgf.m)



MILLING CHUCK KITS KIT FORTE SERRAGGIO
 KRAFTSPANNFUTTERSATZ JEUX À FORT SERRAGE
 НАБОРЫ СИЛОВЫХ ПАТРОНОВ С ЦАНГАМИ К НИМ 铣夹头组套

Kit Box: 1 milling chuck + 1 collets kit + 1 wrench

Cassetta Corredo: 1 mandrino forte serraggio + 1 serie pinze + 1 chiave

Ausstattungskasten: 1 Kraftspannfutter + 1 Spannzangensatz + 1 Spannschlüssel

Boîte d'équipement: 1 mandrin à fort serrage + 1 jeux de pince + 1 clé

Набор: 1 патрон + 1 набор цанг + 1 ключ

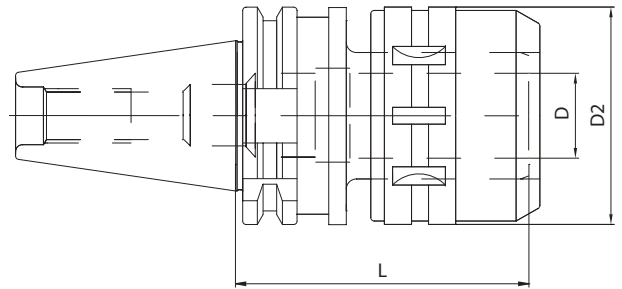
组件盒: 1 个铣夹头 + 1 个夹头套装 + 1 个扳手



	CODICE ORDINAZIONE ORDER CODE	PRICE	COMPOSIZIONE COMPOSITION
ISO 40	KIT BT40 C20	157,00	N°1 BT40 L80 C20 + n°5 pinze K20: Ø6,8,10,12,16
	KIT BT40 C32	188,00	N°1 BT40 L105 C32 + n°7 pinze K32: Ø6,8,10,12,16,20,25
ISO 50	KIT BT50 C20	178,00	N°1 BT 50 L105 C20 + n°5 pinze K20: Ø6,8,10,12,16
	KIT BT50 C32	209,00	N°1 BT 50 L105 C32 + n°7 pinze K32: Ø6,8,10,12,16,20,25

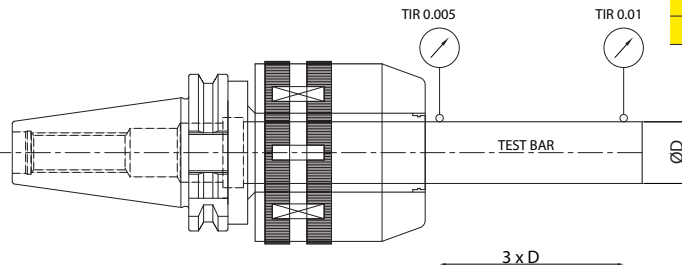
MILLING CHUCK MANDRINI A FORTE SERRAGGIO
 KRAFTSPANNFUTTER MANDRINS A FORT SERRAGE
 УСИЛЕННЫЕ ОПРАВКИ 铣夹头

DIN 69871 AD



SUPPLIED WITH WRENCH • FORNITI CON CHIAVE INCLUSA
 INKLUSIVE SPANNSCHLÜSSEL • CLÉ INCLUSE
 ПОСТАВЛЯЕТСЯ С КЛЮЧОМ • 供货时提供扳手

CODE N.	PRICE	DESCRIPTION	ISO	D	D2	L	G6,3 12000 RPM
214-01308	100,00	TC40H90C20	40	20	53	90	-
214-01301	102,00	TC40H105C20	40	20	53	105	-
214-01302	111,00	TC40H105C32	40	32	68	100	-
214-01304	120,00	TC50H105C20	50	20	53	105	-
214-01305	132,00	TC50H105C32	50	32	68	105	-
214-01306	152,00	TC50H135C32	50	32	68	135	-



MILLING CHUCK (diameter)	SPECIFICATION (DIN)	TOLERANCE (Taper shank)	RUN-OUT (3xD)	CLAMPING TORQUE
C20	AT3	TC40 (0~+0,003)	0~0,01	980M.m (100 Kgf.m)
C32		TC50 (0~+0,004)		3430M.m (350 Kgf.m)

Accessories
 Accessori
 Zubehör
 Accessoires
 Принадлежности
 零件



MILLING CHUCK KITS KIT FORTE SERRAGGIO
 KRAFTSPANNFUTTERSATZ JEUX À FORT SERRAGE
 НАБОРЫ СИЛОВЫХ ПАТРОНОВ С ЦАНГАМИ К НИМ 铣夹头组套

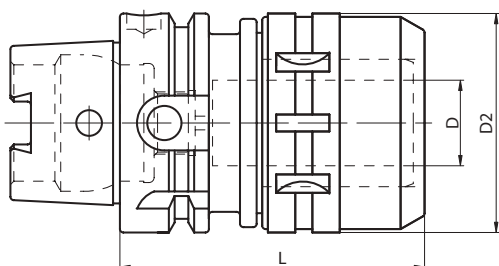
- Kit Box:** 1 milling chuck + 1 collets kit + 1 wrench
Cassetta Corredo: 1 mandrino forte serraggio + 1 serie pinze + 1 chiave
Ausstattungskasten: 1 Kraftspannfutter + 1 Spannzangensatz + 1 Spannschlüssel
Boîte d'équipement: 1 mandrin à fort serrage + 1 jeux de pince + 1 clé
Набор: 1 патрон + 1 набор цанг + 1 ключ
组件盒: 1 个铣夹头 + 1 个夹头套装 + 1 个扳手



	CODICE ORDINAZIONE ORDER CODE	PRICE	COMPOSIZIONE COMPOSITION
ISO 40	KIT TC40 C20	157,00	N°1 TC 40 L90 C20 + n°5 pinze K20: Ø6,8,10,12,16
	KIT TC40 C32	188,00	N°1 TC 40 L105 C32 + n°7 pinze K32: Ø6,8,10,12,16,20,25
ISO 50	KIT TC50 C20	178,00	N°1 TC 50 L105 C20 + n°5 pinze K20: Ø6,8,10,12,16
	KIT TC50 C32	209,00	N°1 TC 50 L105 C32 + n°7 pinze K32: Ø6,8,10,12,16,20,25

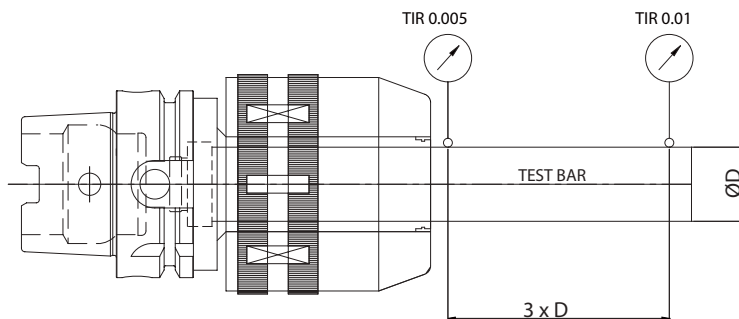
MILLING CHUCK MANDRINI FORTE SERRAGGIO
 KRAFTSPANNFUTTER MANDRINS A FORT SERRAGE
 УСИЛЕННЫЕ ОПРАВКИ 铣夹头

DIN 69893 A+C



HSK	CODE N.	PRICE	DESCRIPTION	D	D2	L	G6,3 12000
63	214-01701	225,00	HSK63AH90C20	20	54	90	•
63	214-01702	228,00	HSK63AH130C32	32	72	110	•
100	214-01705		HSK100AH110C20	20	54	110	•
100	214-01706		HSK100AH123C32	32	72	123	•
125	214-01708		HSK125AH125C32	32	72	125	•

- SUPPLIED WITH WRENCH • FORNITI CON CHIAVE INCLUSA
- INKLUSIVE SPANNSCHLÜSSEL • CLÉ INCLUSE
- ПОСТАВЛЯЕТСЯ С КЛЮЧОМ • 供货时提供扳手



Accessories
 Accessori
 Zubehör
 Accessoires
 Принадлежности
 零件

MILLING CHUCK (diameter)	SPECIFICATION (DIN)	RUN-OUT (3xD)	CLAMPING TORQUE
C20	DIN 69893 A	0~0,01	980M.m (100 Kgf.m)
C32	HSK40A		3430M.m (350 Kgf.m)
	HSK50A		
	HSK63A		
	HSK100A		

MILLING AND DRILL CHUCKS

04

MILLING CHUCK KITS KIT FORTE SERRAGGIO
 KRAFTSPANNFUTTERSATZ JEUX À FORT SERRAGE
 НАБОРЫ СИЛОВЫХ ПАТРОНОВ С ЦАНГАМИ К НИМ 铣夹头组件

DIN 69893

- Kit Box:** 1 milling chuck + 1 collets kit + 1 wrench
Cassetta Corredo: 1 mandrino forte serraggio + 1 serie pinze + 1 chiave
Ausstattungskasten: 1 Kraftspannfutter + 1 Spannzangensatz + 1 Spannschlüssel
Boîte d'équipement: 1 mandrin à fort serrage + 1 jeux de pince + 1 clé
Набор: 1 патрон + 1 набор цанг + 1 ключ
组件盒: 1 个铣夹头 + 1 个夹头套装 + 1 个扳手

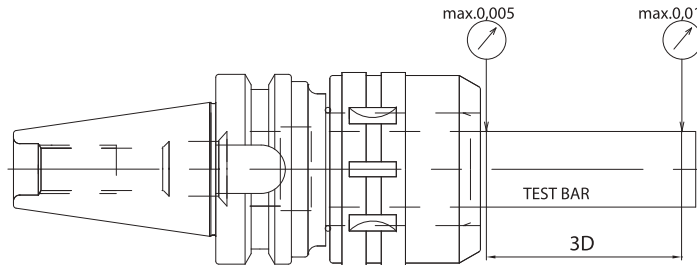


CODICE ORDINAZIONE ORDER CODE	PRICE	COMPOSIZIONE COMPOSITION
KIT HSK63A C20	283,00	N° HSK63AH90C20 + n°5 pinze K20: Ø6,8,10,12,16 + chiave
KIT HSK63A C32	307,00	N° HSK63AH130C32 + n°7 pinze K32: Ø6,8,10,12,16,20,25 + chiave

MILLING CHUCK MANDRINI A FORTE SERRAGGIO
 KRAFTSPANNFUTTER MANDRINS A FORT SERRAGE
 УСИЛЕННЫЕ ОПРАВКИ 铣夹头

JIS-B 6339 MAS 403/BT

HIGH-SPEED LINE



CODE N.	PRICE	DESCRIPTION	ISO	D	D2	L	L1	G6,3 20000 RPM
214-01510	150,00	BT40H80C20HS	40	20	54	80	70	•
214-01511	153,00	BT40H105C20HS	40	20	54	105	70	•
214-01512	162,00	BT40H90C32HS	40	32	74	90	100	•
214-01513	174,00	BT50H105C20HS	50	20	54	105	70	•
214-01514	201,00	BT50H105C32HS	50	32	74	105	100	•

MILLING CHUCK (I.D)	STANDARD	TOLERANCE (Taper shank)	RUN-OUT	CLAMPING TORQUE
C20	AT3	ISO40 (0~ +0,003)	0,01mm at 3D	980 Nm
C32		ISO50 (0~+0,004)		3430 Nm

MILLING CHUCK KITS KIT FORTE SERRAGGIO
 KRAFTSPANNFUTTERSATZ JEUX À FORT SERRAGE
 НАБОРЫ СИЛОВЫХ ПАТРОНОВ С ЦАНГАМИ К НИМ 铣夹头组套

- Kit Box:** 1 milling chuck + 1 collets kit + 1 wrench
Cassetta Corredo: 1 mandrino forte serraggio + 1 serie pinze + 1 chiave
Ausstattungskasten: 1 Kraftspannfutter + 1 Spannzangensatz + 1 Spannschlüssel
Boîte d'équipement: 1 mandrin à fort serrage + 1 jeux de pince + 1 clé
Набор: 1 патрон + 1 набор цанг + 1 ключ
组件盒: 1 个铣夹头 + 1 个夹头套装 + 1 个扳手

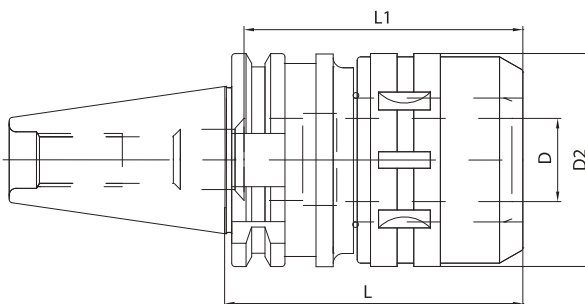


CODICE ORDINAZIONE ORDER CODE	PRICE	COMPOSIZIONE COMPOSITION
KIT BT40 C20HS	208,00	N°1 BT40 L80 C20 + n°5 pinze K20: Ø6,8,10,12,16
KIT BT40 C32HS	242,00	N°1 BT40 L105 C32 + n°7 pinze K32: Ø6,8,10,12,16,20,25

MILLING CHUCK MANDRINI A FORTE SERRAGGIO
 KRAFTSPANNFUTTER MANDRINS A FORT SERRAGE
 УСИЛЕННЫЕ ОПРАВКИ 铣夹头

DIN 69871A

HIGH-SPEED LINE



CODE N.	PRICE	DESCRIPTION	ISO	D	D2	L	L1	G6,3 20000 RPM
214-01202	156,00	TC40H105C20HS	40	20	54	105	70	•
214-01203	169,00	TC40H105C32HS	40	32	74	105	100	•
214-01204	178,00	TC50H105C20HS	50	20	54	105	70	•
214-01205	205,00	TC50H105C32HS	50	32	74	105	100	•

MILLING CHUCK (I.D)	STANDARD	TOLERANCE (Taper shank)	RUN-OUT	CLAMPING TORQUE
C20	AT3	ISO40 (0~ +0,003)	0,01mm at 3D	980 Nm
C32		ISO50 (0~+0,004)		3430 Nm

MILLING CHUCK KITS KIT FORTE SERRAGGIO
 KRAFTSPANNFUTTERSATZ JEUX À FORT SERRAGE
 НАБОРЫ СИЛОВЫХ ПАТРОНОВ С ЦАНГАМИ К НИМ 铣夹头组套

Kit Box: 1 milling chuck + 1 collets kit + 1 wrench

Cassetta Corredo: 1 mandrino forte serraggio + 1 serie pinze + 1 chiave

Ausstattungskasten: 1 Kraftspannfutter + 1 Spannzangensatz + 1 Spannschlüssel

Boîte d'équipement: 1 mandrin à fort serrage + 1 jeux de pince + 1 clé

Набор: 1 патрон + 1 набор цанг + 1 ключ

组件盒: 1 个铣夹头 + 1 个夹头套装 + 1 个扳手

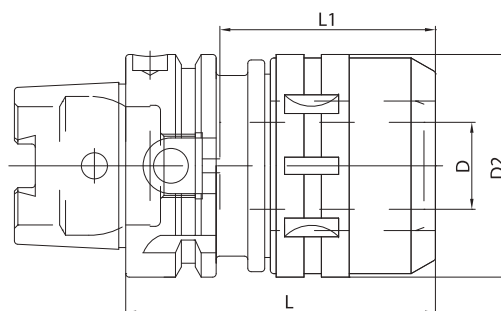


CODICE ORDINAZIONE ORDER CODE	PRICE	COMPOSIZIONE COMPOSITION
KIT TC40 C20HS	211,00	N°1 TC 40 L105 C20 + n°5 pinze K20: Ø6,8,10,12,16
KIT TC40 C32HS	246,00	N°1 TC 40 L105 C32 + n°7 pinze K32: Ø6,8,10,12,16,20,25

MILLING CHUCK MANDRINI A FORTE SERRAGGIO
 KRAFTSPANNFUTTER MANDRINS A FORT SERRAGE
 УСИЛЕННЫЕ ОПРАВКИ 铣夹头

DIN 69893-HSKA

HIGH-SPEED LINE



CODE N.	PRICE	DESCRIPTION	HSK	D	D2	L	L1	G6,3 20000 RPM
214-01709	312,00	HSK63AH105C20HS	63	20	54	105	70	•
214-01710	329,00	HSK63AH130C32HS	63	32	74	130	100	•
214-01711		HSK100AH110C20HS	100	20	54	110	70	•
214-01712		HSK100AH135C32HS	100	32	74	135	100	•

MILLING CHUCK (I.D)	STANDARD	TOLERANCE (Taper shank)	RUN-OUT	CLAMPING TORQUE
C20	AT3	ISO40 (0~ +0,003)	0,01mm at 3D	980 Nm
C32		ISO50 (0~+0,004)		3430 Nm

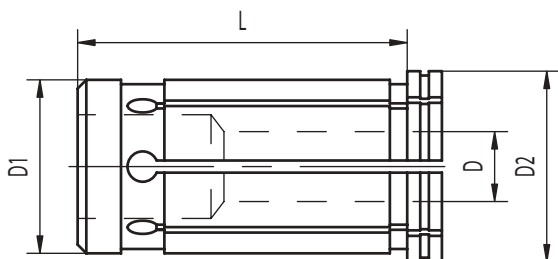
MILLING CHUCK KITS KIT FORTE SERRAGGIO
 KRAFTSPANNFUTTERSATZ JEUX À FORT SERRAGE
 НАБОРЫ СИЛОВЫХ ПАТРОНОВ С ЦАНГАМИ К НИМ 铣夹头组套

- Kit Box:** 1 milling chuck + 1 collets kit + 1 wrench
Cassetta Corredo: 1 mandrino forte serraggio + 1 serie pinze + 1 chiave
Ausstattungskasten: 1 Kraftspannfutter + 1 Spannzangensatz + 1 Spannschlüssel
Boîte d'équipement: 1 mandrin à fort serrage + 1 jeux de pince + 1 clé
Набор: 1 патрон + 1 набор цанг + 1 ключ
组件盒: 1 个铣夹头 + 1 个夹头套装 + 1 个扳手



CODICE ORDINAZIONE ORDER CODE	PRICE	COMPOSIZIONE COMPOSITION
KIT HSK63A C20HS	370,00	N°1 BT 50 L105 C20 + n°5 pinze K20: Ø6,8,10,12,16
KIT HSK63A C32HS	410,00	N°1 BT 50 L130 C32 + n°7 pinze K32: Ø6,8,10,12,16,20,25

COLLETS FOR MILLING CHUCK PINZE PER MANDRINI A FORTE SERRAGGIO
 SPANNZANGEN FÜR KRAFTSPANNFUTTER PINCES POUR MANDRINS A FORT SERRAGE
 ЦАНГИ ДЛЯ УСИЛЕННЫХ ПАТРОНОВ 铣夹头用夹头



TYPE	PRICE	D1	D2	L	D NOLE SIZE
K20D..	9,50	20	25	50	6;8;10;12;16
K32D..	9,80	32	37	60	6;8;10;12;16;20;25



MANUFACTURING SPECIFICATIONS

- For tool shank tolerance h6
- Maximum form and dimensional precision
- Max concentricity error between D and D1: 0,005mm.



CARATTERISTICHE COSTRUTTIVE

- Per utensili con gambo in tolleranza h6
- Altissima precisione dimensionale e di forma
- Max errore di concentricità tra D e D1 - 0,005 mm.



KONSTRUKTIONSDATEN:

- für Werkzeuge mit Schaft Toleranz h6;
- sehr hohe Maß- und Formgenauigkeit;
- Max. Rundlauffehler zwischen D und D1 - 0,005 mm.



CARACTÉRISTIQUES CONSTRUCTIVES:

- pour outils avec queue en tolérance h6;
- très haute précision dimensionnelle et de forme;
- erreur maximale de concentricité entre D et D1 - 0,005 mm.



ТЕХНИЧЕСКИЕ ХАРАКТЕРИСТИКИ

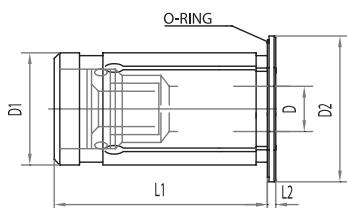
- Для инструментов с допуском h6 на хвостовике
- Максимальная точность обработки
- Максимальное биение диаметра D относительно D1: 0,005mm



技术参数

- 刀柄公差为H6
- 超大结构和尺寸精度
- D与D1之间最大的同心度误差 0.005mm

WATERTIGHT COLLETS PINZE A TENUTA STAGNA
 SPANNZANGEN ABGEDICHTET PINCES ETANCHES
 ЦАНГИ ДЛЯ ВНУТРЕННЕЙ ПОДАЧИ СОЖ 水密性 夹头



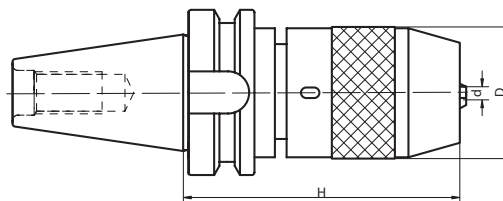
TYPE	PRICE	D1	D2	L1	L2	D nole size
OGX12D...		12	21	45	2	3;4;5;6;8;
OGX20D...	63,00	20	29	50.5	2	3;4;5;6;8;10;12;16
OGX32D...	62,00	32	39	60.5	3	6;8;10;12;16;20;25

OGX TYPE IS 100% COOLANT WATERPROOF OVER TO 80 BAR.
 PLEASE INSERT THE REDUCTION SLEEVE INTO THE CHUCK AFTER INSERT
 A CUTTING TOOL INTO THE REDUCTION SLEEVE.



UNIVERSAL DRILL CHUCKS MANDRINI PORTAPUNTE INTEGRALI
 NC-BOHRFUTTER MANDRINS UNIVERSELS DE PERCAGE
 УНИВЕРСАЛЬНЫЕ СВЕРЛИЛЬНЫЕ ПАТРОНЫ 万能钻夹头

JIS-B 6339 MAS 403/BT A



CODE N.	PRICE	DESCRIPTION	ISO	H	D	CLAMPING CAPACITY	WRENCH
252-11501	110,00	BT40H95R1-13	40	95	50	1-13	816-111024
252-11502	119,00	BT40H116R3-16	40	116	57	3-16	816-111025
252-11503	144,00	BT50H110R1-13	50	110	50	1-13	816-111024
252-11504	161,00	BT50H110R3-16	50	110	57	3-16	816-111025

RUNOUT ACCURACY 0.05 MM T.I.R.

Supplied with spanner wrench to allow the application of supplementary gripping torque.
 DO NOT USE IN REVOLUTION IN COUNTER-CLOCKWISE DIRECTION.

PRECISIONE DI ROTAZIONE 0.05 MM

Per incrementare la forza di serraggio i mandrini sono forniti con chiave di bloccaggio.
 NON DEVONO ESSERE USATI PER LAVORAZIONI CON ROTAZIONE A SINISTRA.

RUNDLAUFGENAUIGKEIT 0.05 MM

Zur Erhöhung der Spannkraft werden diese Futter mit Spannschlüssel geliefert.
 BEI LINKS LAUFENDEN BEARBEITUNGEN SIND DIESE FUTTER NICHT ZU BENUTZEN.

PRECISION DE ROTATION 0.05 MM

Les mandrins sont fournis avec clé de blocage pour augmenter la force de serrage.
 NE PAS UTILISER DANS USINAGE AVEC ROTATION A' GAUCHE.

БИЕНИЕ 0,05 MM

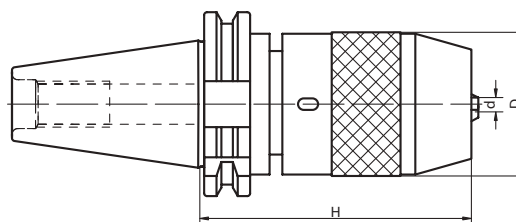
Поставляется с ключом для более сильного зажима.
 НЕ ВРАЩАТЬ ПРОТИВ ЧАСОВОЙ СТРЕЛКИ!

径向跳动精度 0.05 MM T.I.R.

提供活动扳手，以便施加补充夹紧力。
 不得用于逆时针方向旋转。

UNIVERSAL DRILL CHUCKS MANDRINI PORTAPUNTE INTEGRALI
 NC-BOHRFUTTER MANDRINS UNIVERSELS DE PERCAGE
 УНИВЕРСАЛЬНЫЕ СВЕРЛИЛЬНЫЕ ПАТРОНЫ 万能钻夹头

DIN 69871 A



CODE N.	PRICE	DESCRIPTION	ISO	H	D	CLAMPING CAPACITY	WRENCH
252-11211	103,00	TC40H100R1-13	40	100	50	1-13	816-111024
252-11212	112,00	TC40H115R3-16	40	115	57	3-16	816-111025
252-11213	144,00	TC50H100R1-13	50	100	50	1-13	816-111024
252-11214	161,00	TC50H105R3-16	50	105	57	3-16	816-111025

RUNOUT ACCURACY 0.05 MM T.I.R.

Supplied with spanner wrench to allow the application of supplementary gripping torque.
 DO NOT USE IN REVOLUTION IN COUNTER-CLOCKWISE DIRECTION.

PRECISIONE DI ROTAZIONE 0.05 MM

Per incrementare la forza di serraggio i mandrini sono forniti con chiave di bloccaggio.
 NON DEVONO ESSERE USATI PER LAVORAZIONI CON ROTAZIONE A SINISTRA.

RUNDLAUFGENAUIGKEIT 0.05 MM

Zur Erhöhung der Spannkraft werden diese Futter mit Spannschlüssel geliefert.
 BEI LINKS LAUFENDEN BEARBEITUNGEN SIND DIESE FUTTER NICHT ZU BENUTZEN.

PRECISION DE ROTATION 0.05 MM

Les mandrins sont fournis avec clé de blocage pour augmenter la force de serrage.
 NE PAS UTILISER DANS USINAGE AVEC ROTATION A' GAUCHE.

БИЕНИЕ 0,05 MM

Поставляется с ключом для более сильного зажима.
 НЕ ВРАЩАТЬ ПРОТИВ ЧАСОВОЙ СТРЕЛКИ!

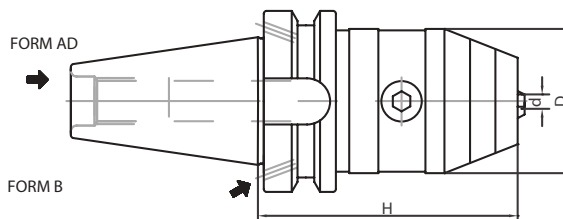
径向跳动精度 0.05 MM T.I.R.

提供活动扳手，以便施加补充夹紧力。
 不得用于逆时针方向旋转。

NC DRILL CHUCKS FOR LEFT AND RIGHT ROTATION
 NC-BOHRFUTTER FÜR RECHTS-UND LINKSLAUF
 СВЕРЛИЛЬНЫЕ ПАТРОНЫ С ВРАЩЕНИЕМ ПО- И ПРОТИВ
 ЧАСОВОЙ СТРЕЛКИ ДЛЯ СТАНКОВ С ЧПУ

MANDRINI PORTAPUNTE INTEGRALI PER ROTAZIONE
 DESTRA E SINISTRA
 MADRIN DE PERCAGE CNC POUR ROTATION GAUCHE-DROITE
 左右旋转 NC 钻夹头

JIS-B 6339 MAS 403/BT A - MAS 403BT/ADB



CODE N.	PRICE	DESCRIPTION	ISO	H	D	CLAMPING CAPACITY	WRENCH
252-11410	147,00	BT40H98R1-13X	40	98	50	1-13	816-152001
252-11411	154,00	BT40H103R3-16X	40	103	50	3-16	816-152002
252-11412	183,00	BT50H109R1-13X	50	109	50	1-13	816-152001
252-11413	191,00	BT50H114R3-16X	50	114	50	3-16	816-152002

RUNOUT ACCURACY 0.05 MM T.I.R.

Suitable for right and left rotation up to 7000 rpm.

PRECISIONE DI ROTAZIONE 0.05 MM.

Adatti per rotazione sia destra che sinistra, con velocità max di 7000 g/min.

RUNDLAUFGENAUIGKEIT 0.05 MM

Sowohl für rechts- als auch links laufende Bearbeitungen geeignet, mit Höchstgeschwindigkeit von 7000 u/min.

PRECISION DE ROTATION 0.05 MM

Utilisables pour rotation droite et gauche, avec maximale vitesse 7000 rpm.

БИЕНИЕ 0,05 MM

Можно вращать по- и против часовой стрелки со скоростью до 7000 об/мин.

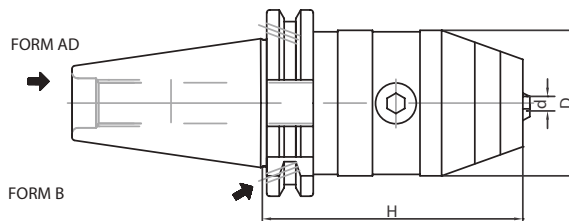
径向跳动精度 0.05 MM T.I.R.

适用于最高转速达 7000 转/分钟的左右旋转

NC DRILL CHUCKS FOR LEFT AND RIGHT ROTATION
 NC-BOHRFUTTER FÜR RECHTS-UND LINKSLAUF
 СВЕРЛИЛЬНЫЕ ПАТРОНЫ С ВРАЩЕНИЕМ ПО- И ПРОТИВ
 ЧАСОВОЙ СТРЕЛКИ ДЛЯ СТАНКОВ С ЧПУ

MANDRINI PORTAPUNTE INTEGRALI PER ROTAZIONE
 DESTRA E SINISTRA
 MADRIN DE PERCAGE CNC POUR ROTATION GAUCHE-DROITE
 左右旋转 NC 钻夹头

DIN 69871 ADB



CODE N.	PRICE	DESCRIPTION	ISO	H	D	CLAMPING CAPACITY	WRENCH
252-11301	147,00	TC40H90R1-13X	40	90	50	1-13	816-152001
252-11302	154,00	TC40H95R3-16X	40	95	57	3-16	816-152001
252-11303	183,00	TC50H90R1-13X	50	90	50	1-13	816-152001
252-11304	191,00	TC50H95R3-16X	50	95	57	3-16	816-152001

RUNOUT ACCURACY 0.05 MM T.I.R.

Suitable for right and left rotation up to 7000 rpm.

PRECISIONE DI ROTAZIONE 0.05 MM.

Adatti per rotazione sia destra che sinistra, con velocità max di 7000 g/min.

RUNDLAUFGENAUIGKEIT 0.05 MM

Sowohl für rechts- als auch links laufende Bearbeitungen geeignet, mit Höchstgeschwindigkeit von 7000 u/min.

PRECISION DE ROTATION 0.05 MM

Utilisables pour rotation droite et gauche, avec maximale vitesse 7000 rpm.

БИЕНИЕ 0,05 MM

Можно вращать по- и против часовой стрелки со скоростью до 7000 об/мин.

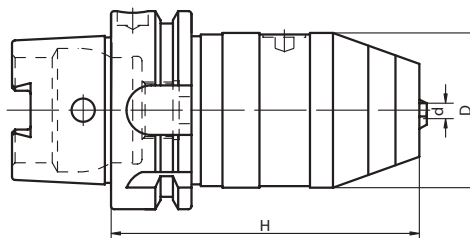
径向跳动精度 0.05 MM T.I.R.

适用于最高转速达 7000 转/分钟的左右旋转

NC-DRILL CHUCKS FOR LEFT AND RIGHT ROTATION
 NC-BOHRFUTTER FÜR RECHTS- UND LINKSLAUF
 СВЕРЛИЛЬНЫЕ ПАТРОНЫ С ВРАЩЕНИЕМ ПО- И ПРОТИВ
 ЧАСОВОЙ СТРЕЛКИ ДЛЯ СТАНКОВ С ЧПУ

MANDRINI PORTAPUNTE INTEGRALI PER ROTAZIONE
 DESTRA E SINISTRA
 MANDRINS DE PERCAGE CNC POUR ROTATION GAUCHE-DROITE
 左右旋转数控钻头

DIN 69893 A+C



HSK	CODE N.	PRICE	DESCRIPTION	H	D	CLAMPING CAPACITY	WRENCH
63 *	252-11733	220,00	HSK63AH105R1-13X	105	50	1-13	816-152001
63 *	252-11734	235,00	HSK63AH110R3-16X	110	57	3-16	816-152002

* WITH INTERNAL COOLANT • CON PASSAGGIO REFRIGERANTE INTERNO
 MIT INNENKÜHLUNG • AVEC ARROSAGE INTERNE
 С ВНУТРЕННЕЙ ПОДАЧЕЙ СОЖ • 配备内部冷却剂

RUNOUT ACCURACY 0.05 MM T.I.R.

Suitable for right and left rotation up to 8000 rpm.

PRECISIONE DI ROTAZIONE 0.05 MM.

Adatti per rotazione sia destra che sinistra, con velocità max di 8000 g/min.

RUNDLAUFGENAUIGKEIT 0.05 MM

Sowohl für rechts - als auch links laufende Bearbeitungen geeignet, mit Höchstgeschwindigkeit von 8000 u/min.

PRÉCISION DE ROTATION 0,05 MM.

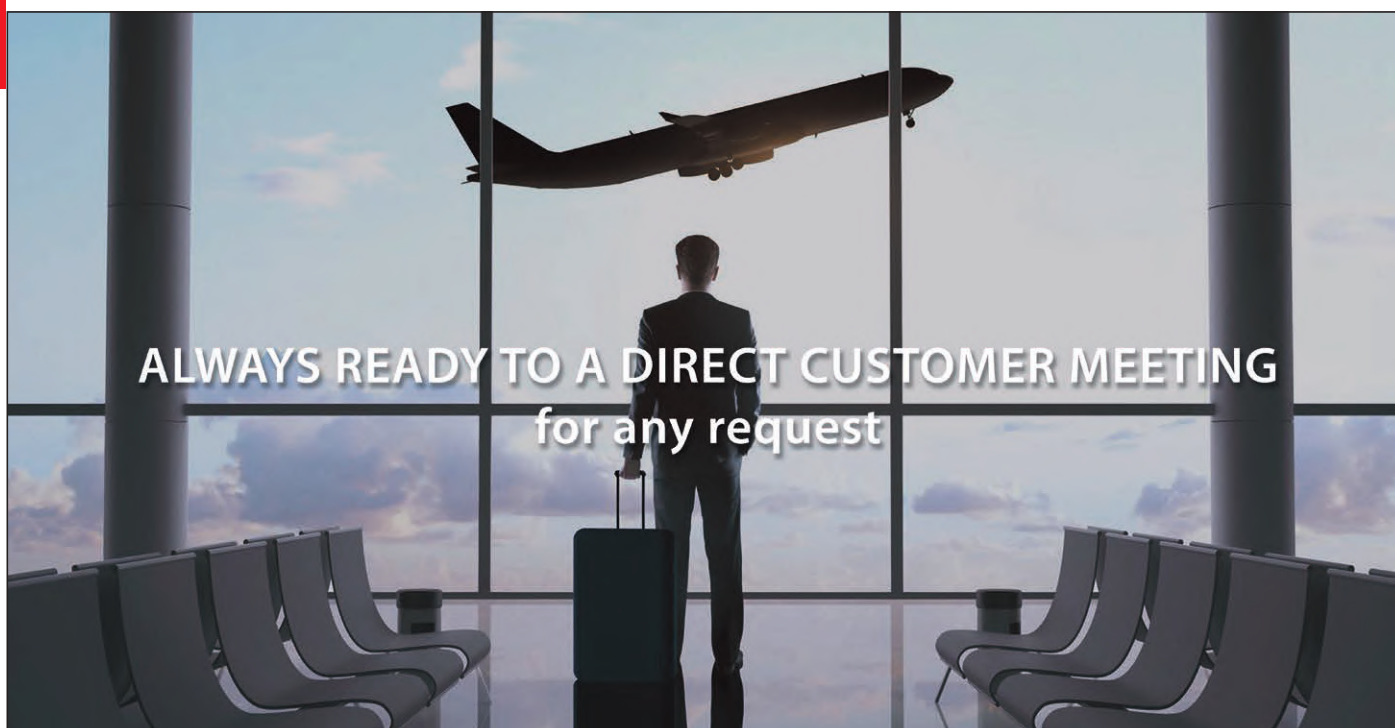
Appropriés pour rotation à droite et à gauche avec vitesse max. de 8000 tour par minute.

БИЕНИЕ 0,05 MM

Можно вращать по- и против часовой стрелки со скоростью до 8000 об/мин.

径向跳动精度 0.05 MM T.I.R.

适用于最高为 8000 转/分钟的左右旋转



KINTEK®



HEAD OFFICE
KINTEK S.R.L. - MAPPANO - TORINO - ITALY



NEW PRODUCTION PLANT
A.M.T S.R.L. - CASELLE T.SE - TORINO - ITALY



MAIN PRODUCTION PLANT
KINTEK TOOLING KFT - BEKESCSABA - HUNGARY

KINTEK s.r.l.

Via Goretta 88/G - 10079 MAPPANO - (TO) - ITALY
Tel. +39 011 99 68 065 - Fax +39 011 99 65 662
e-mail: info@kintek.it
<http://www.kintek.it>