

KINTEK®

COMPONENTI INNOVATIVI TECNOMECCANICI



**MODULAR
BORING SYSTEM**



**SISTEMA MODULARE
DI BARENATURA**



**MODULAR
BOHRSYSTEM**



**SYSTÈME MODULAIRE
D'ALÉSAGE**



**МОДУЛЬНАЯ
СИСТЕМА
ДЛЯ РАСТОЧНЫХ
РЕЗЦОВ**



钻镗系统

SPECIAL OFFER

VALIDITY

from **01-10-2019** to **31-03-2020**





1 TESTINA + 1 MANDRINO + CARTUCCIA 1 HEAD + 1 ARBOR + CARTRIDGE

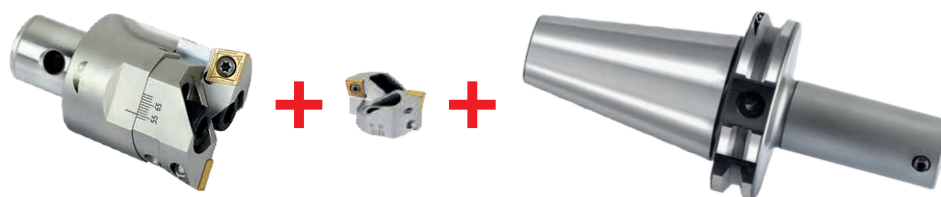


CODE	TOOLHOLDER		HEAD		CARTRIDGE	KIT PRICE
KIT533SK40MD2	290-01201	TC40H85MD2	533-90001	FINISHING BORING HEAD MD2-FNT25-47	534-90001 25-33 TC..06T102..	462,00
KIT533BT40MD2	290-01501	BT40H85MD2	533-90001	FINISHING BORING HEAD MD2-FNT25-47	534-90001 25-33 TC..06T102..	462,00
KIT533SK40MD3	290-01203	TC40H95MD3	533-90002	FINISHING BORING HEAD MD3-FNT32-60	534-90004 32-42 TC..06T102..	477,00
KIT533BT40MD3	290-01503	BT40H95MD3	533-90002	FINISHING BORING HEAD MD3-FNT32-60	534-90004 32-42 TC..06T102..	477,00
KIT533SK40MD4	290-01205	TC40H85MD4	533-90003	FINISHING BORING HEAD MD4-FNT41-74	534-90007 41-54 TC..1102..	536,00
KIT533BT40MD4	290-01505	BT40H85MD4	533-90003	FINISHING BORING HEAD MD4-FNT41-74	534-90007 41-54 TC..1102..	536,00
KIT533SK40MD5	290-01207	TC40H75MD5	533-90004	FINISHING BORING HEAD MD5-FNT53-95	534-90010 53-70 TC..1102..	596,00
KIT533BT40MD5	290-01507	BT40H75MD5	533-90004	FINISHING BORING HEAD MD5-FNT53-95	534-90010 53-70 TC..1102..	596,00
KIT533SK40MD2L	290-01202	TC40H100MD2	533-90001	FINISHING BORING HEAD MD2-FNT25-47	534-90001 25-33 TC..06T102..	471,00
KIT533BT40MD2L	290-01502	BT40H100MD2	533-90001	FINISHING BORING HEAD MD2-FNT25-47	534-90001 25-33 TC..06T102..	471,00
KIT533SK40MD3L	290-01204	TC40H125MD3	533-90002	FINISHING BORING HEAD MD3-FNT32-60	534-90004 32-42 TC..06T102..	486,00
KIT533BT40MD3L	290-01504	BT40H125MD3	533-90002	FINISHING BORING HEAD MD3-FNT32-60	534-90004 32-42 TC..06T102..	486,00
KIT533SK40MD4L	290-01206	TC40H130MD4	533-90003	FINISHING BORING HEAD MD4-FNT41-74	534-90007 41-54 TC..1102..	541,00
KIT533BT40MD4L	290-01506	BT40H130MD4	533-90003	FINISHING BORING HEAD MD4-FNT41-74	534-90007 41-54 TC..1102..	541,00
KIT533SK40MD5L	290-01208	TC40H125MD5	533-90004	FINISHING BORING HEAD MD5-FNT53-95	534-90010 53-70 TC..1102..	601,00
KIT533BT40MD5L	290-01508	BT40H125MD5	533-90004	FINISHING BORING HEAD MD5-FNT53-95	534-90010 53-70 TC..1102..	601,00
KIT533HSKMD2	290-01701	HSK63AH85MD2	533-90001	FINISHING BORING HEAD MD2-FNT25-47	534-90001 25-33 TC..06T102..	587,00
KIT533HSKMD3	290-01703	HSK63AH95MD3	533-90002	FINISHING BORING HEAD MD3-FNT32-60	534-90004 32-42 TC..06T102..	602,00
KIT533HSKMD4	290-01705	HSK63AH85MD4	533-90003	FINISHING BORING HEAD MD4-FNT41-74	534-90007 41-54 TC..1102..	657,00
KIT533HSKMD5	290-01707	HSK63AH75MD5	533-90004	FINISHING BORING HEAD MD5-FNT53-95	534-90010 53-70 TC..1102..	717,00
KIT533HSKMD2L	290-01702	HSK63AH100MD2	533-90001	FINISHING BORING HEAD MD2-FNT25-47	534-90001 25-33 TC..06T102..	596,00
KIT533HSKMD3L	290-01704	HSK63AH125MD3	533-90002	FINISHING BORING HEAD MD3-FNT32-60	534-90004 32-42 TC..06T102..	611,00
KIT533HSKMD4L	290-01706	HSK63AH130MD4	533-90003	FINISHING BORING HEAD MD4-FNT41-74	534-90007 41-54 TC..1102..	666,00
KIT533HSKMD5L	290-01708	HSK63AH125MD5	533-90004	FINISHING BORING HEAD MD5-FNT53-95	534-90010 53-70 TC..1102..	726,00
KIT533C50MD2	290-07601	C50H85MD2	533-90001	FINISHING BORING HEAD MD2-FNT25-47	534-90001 25-33 TC..06T102..	575,00
KIT533C50MD3	290-07603	C50H95MD3	533-90002	FINISHING BORING HEAD MD3-FNT32-60	534-90004 32-42 TC..06T102..	590,00
KIT533C50MD4	290-07605	C50H85MD4	533-90003	FINISHING BORING HEAD MD4-FNT41-74	534-90007 41-54 TC..1102..	645,00
KIT533C50MD5	290-07607	C50H75MD5	533-90004	FINISHING BORING HEAD MD5-FNT53-95	534-90010 53-70 TC..1102..	744,00
KIT533C50MD2L	290-07602	C50H100MD2	533-90001	FINISHING BORING HEAD MD2-FNT25-47	534-90001 25-33 TC..06T102..	575,00
KIT533C50MD3L	290-07604	C50H125MD3	533-90002	FINISHING BORING HEAD MD3-FNT32-60	534-90004 32-42 TC..06T102..	620,00
KIT533C50MD4L	290-07606	C50H130MD4	533-90003	FINISHING BORING HEAD MD4-FNT41-74	534-90007 41-54 TC..1102..	675,00
KIT533C50MD5L	290-07608	C50H125MD5	533-90004	FINISHING BORING HEAD MD5-FNT53-95	534-90010 53-70 TC..1102..	775,00
KIT533C63MD2	290-07609	C63H85MD2	533-90001	FINISHING BORING HEAD MD2-FNT25-47	534-90001 25-33 TC..06T102..	575,00
KIT533C63MD3	290-07611	C63H95MD3	533-90002	FINISHING BORING HEAD MD3-FNT32-60	534-90004 32-42 TC..06T102..	620,00
KIT533C63MD4	290-07613	C63H85MD4	533-90003	FINISHING BORING HEAD MD4-FNT41-74	534-90007 41-54 TC..1102..	645,00
KIT533C63MD5	290-07615	C63H75MD5	533-90004	FINISHING BORING HEAD MD5-FNT53-95	534-90010 53-70 TC..1102..	744,00
KIT533C63MD2L	290-07610	C63H100MD2	533-90001	FINISHING BORING HEAD MD2-FNT25-47	534-90001 25-33 TC..06T102..	575,00
KIT533C63MD3L	290-07612	C63H125MD3	533-90002	FINISHING BORING HEAD MD3-FNT32-60	534-90004 32-42 TC..06T102..	590,00
KIT533C63MD4L	290-07614	C63H130MD4	533-90003	FINISHING BORING HEAD MD4-FNT41-74	534-90007 41-54 TC..1102..	675,00
KIT533C63MD5L	290-07616	C63H125MD5	533-90004	FINISHING BORING HEAD MD5-FNT53-95	534-90010 53-70 TC..1102..	775,00



1 TESTINA + 1 MANDRINO + CARTUCCIA

1 HEAD + 1 ARBOR + CARTRIDGE

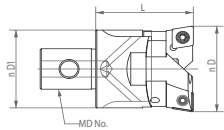


CODE	TOOLHOLDER		HEAD		CARTRIDGE	KIT PRICE
KIT523SK40MD2	290-01201	TC40H85MD2	523-90001	DOUBLE-BIT HEAD MD2-CL25-33	524-90001 25-33 CC..0602..	243,00
KIT523BT40MD2	290-01501	BT40H85MD2	523-90001	DOUBLE-BIT HEAD MD2-CL25-33	524-90001 25-33 CC..0602..	243,00
KIT523SK40MD3	290-01203	TC40H95MD3	523-90002	DOUBLE-BIT HEAD MD3-CL32-42	524-90002 32-42 CC..09T3..	260,00
KIT523BT40MD3	290-01503	BT40H95MD3	523-90002	DOUBLE-BIT HEAD MD3-CL32-42	524-90002 32-42 CC..09T3..	260,00
KIT523SK40MD4	290-01205	TC40H85MD4	523-90003	DOUBLE-BIT HEAD MD4-CL41-54	524-90003 41-54 CC..09T3..	291,00
KIT523BT40MD4	290-01505	BT40H85MD4	523-90003	DOUBLE-BIT HEAD MD4-CL41-54	524-90003 41-54 CC..09T3..	291,00
KIT523SK40MD5	290-01207	TC40H75MD5	523-90004	DOUBLE-BIT HEAD MD5-CL53-70	524-90004 53-70 CC..1204..	313,00
KIT523BT40MD5	290-01507	BT40H75MD5	523-90004	DOUBLE-BIT HEAD MD5-CL53-70	524-90004 53-70 CC..1204..	313,00
KIT523SK40MD2L	290-01202	TC40H100MD2	523-90001	DOUBLE-BIT HEAD MD2-CL25-33	524-90001 25-33 CC..0602..	252,00
KIT523BT40MD2L	290-01502	BT40H100MD2	523-90001	DOUBLE-BIT HEAD MD2-CL25-33	524-90001 25-33 CC..0602..	252,00
KIT523SK40MD3L	290-01204	TC40H125MD3	523-90002	DOUBLE-BIT HEAD MD3-CL32-42	524-90002 32-42 CC..09T3..	269,00
KIT523BT40MD3L	290-01504	BT40H125MD3	523-90002	DOUBLE-BIT HEAD MD3-CL32-42	524-90002 32-42 CC..09T3..	269,00
KIT523SK40MD4L	290-01206	TC40H130MD4	523-90003	DOUBLE-BIT HEAD MD4-CL41-54	524-90003 41-54 CC..09T3..	296,00
KIT523BT40MD4L	290-01506	BT40H130MD4	523-90003	DOUBLE-BIT HEAD MD4-CL41-54	524-90003 41-54 CC..09T3..	296,00
KIT523SK40MD5L	290-01208	TC40H125MD5	523-90004	DOUBLE-BIT HEAD MD5-CL53-70	524-90004 53-70 CC..1204..	318,00
KIT523BT40MD5L	290-01508	BT40H125MD5	523-90004	DOUBLE-BIT HEAD MD5-CL53-70	524-90004 53-70 CC..1204..	318,00
KIT523HSKMD2	290-01701	HSK63AH85MD2	523-90001	DOUBLE-BIT HEAD MD2-CL25-33	524-90001 25-33 CC..0602..	368,00
KIT523HSKMD3	290-01703	HSK63AH95MD3	523-90002	DOUBLE-BIT HEAD MD3-CL32-42	524-90002 32-42 CC..09T3..	385,00
KIT523HSKMD4	290-01705	HSK63AH85MD4	523-90003	DOUBLE-BIT HEAD MD4-CL41-54	524-90003 41-54 CC..09T3..	412,00
KIT523HSKMD5	290-01707	HSK63AH75MD5	523-90004	DOUBLE-BIT HEAD MD5-CL53-70	524-90004 53-70 CC..1204..	434,00
KIT523HSKMD2L	290-01702	HSK63AH100MD2	523-90001	DOUBLE-BIT HEAD MD2-CL25-33	524-90001 25-33 CC..0602..	377,00
KIT523HSKMD3L	290-01704	HSK63AH125MD3	523-90002	DOUBLE-BIT HEAD MD3-CL32-42	524-90002 32-42 CC..09T3..	394,00
KIT523HSKMD4L	290-01706	HSK63AH130MD4	523-90003	DOUBLE-BIT HEAD MD4-CL41-54	524-90003 41-54 CC..09T3..	421,00
KIT523HSKMD5L	290-01708	HSK63AH125MD5	523-90004	DOUBLE-BIT HEAD MD5-CL53-70	524-90004 53-70 CC..1204..	443,00
KIT523C50MD2	290-07601	C50H85MD2	523-90001	DOUBLE-BIT HEAD MD2-CL25-33	524-90001 25-33 CC..0602..	356,00
KIT523C50MD3	290-07603	C50H95MD3	523-90002	DOUBLE-BIT HEAD MD3-CL32-42	524-90002 32-42 CC..09T3..	373,00
KIT523C50MD4	290-07605	C50H85MD4	523-90003	DOUBLE-BIT HEAD MD4-CL41-54	524-90003 41-54 CC..09T3..	400,00
KIT523C50MD5	290-07607	C50H75MD5	523-90004	DOUBLE-BIT HEAD MD5-CL53-70	524-90004 53-70 CC..1204..	461,00
KIT523C50MD2L	290-07602	C50H100MD2	523-90001	DOUBLE-BIT HEAD MD2-CL25-33	524-90001 25-33 CC..0602..	356,00
KIT523C50MD3L	290-07604	C50H125MD3	523-90002	DOUBLE-BIT HEAD MD3-CL32-42	524-90002 32-42 CC..09T3..	403,00
KIT523C50MD4L	290-07606	C50H130MD4	523-90003	DOUBLE-BIT HEAD MD4-CL41-54	524-90003 41-54 CC..09T3..	430,00
KIT523C50MD5L	290-07608	C50H125MD5	523-90004	DOUBLE-BIT HEAD MD5-CL53-70	524-90004 53-70 CC..1204..	492,00
KIT523C63MD2	290-07609	C63H85MD2	523-90001	DOUBLE-BIT HEAD MD2-CL25-33	524-90001 25-33 CC..0602..	356,00
KIT523C63MD3	290-07611	C63H95MD3	523-90002	DOUBLE-BIT HEAD MD3-CL32-42	524-90002 32-42 CC..09T3..	403,00
KIT523C63MD4	290-07613	C63H85MD4	523-90003	DOUBLE-BIT HEAD MD4-CL41-54	524-90003 41-54 CC..09T3..	400,00
KIT523C63MD5	290-07615	C63H75MD5	523-90004	DOUBLE-BIT HEAD MD5-CL53-70	524-90004 53-70 CC..1204..	461,00
KIT523C63MD2L	290-07610	C63H100MD2	523-90001	DOUBLE-BIT HEAD MD2-CL25-33	524-90001 25-33 CC..0602..	356,00
KIT523C63MD3L	290-07612	C63H125MD3	523-90002	DOUBLE-BIT HEAD MD3-CL32-42	524-90002 32-42 CC..09T3..	373,00
KIT523C63MD4L	290-07614	C63H130MD4	523-90003	DOUBLE-BIT HEAD MD4-CL41-54	524-90003 41-54 CC..09T3..	430,00
KIT523C63MD5L	290-07616	C63H125MD5	523-90004	DOUBLE-BIT HEAD MD5-CL53-70	524-90004 53-70 CC..1204..	492,00



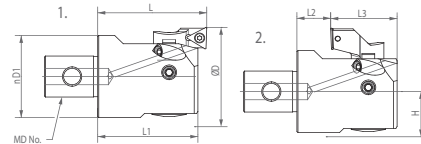
TESTINA SINGOLA SINGLE HEAD

DOUBLE-BIT HEADS WITH CARTRIDGE **NEWS**



CODE N.		PRICE
523-90001	MD2-CL2533	195,00
523-90002	MD3-CL3242	211,00
523-90003	MD4-CL4154	232,00
523-90004	MD5-CL5370	252,00
523-90005	MD6-CL6890	260,00
523-90006	MD6-CL88110	272,00
523-90007	MD6-CL98126	346,00
523-90008	MD6-CL125153	353,00

FINISHING BORING HEADS **NEWS**



CODE N.		PRICE
533-90001	MD2-FNT2547	423,00
533-90002	MD3-FNT3260	435,00
533-90003	MD4-FNT4174	484,00
533-90004	MD5-FNT5395	560,00
533-90005	MD6-FNT68150	683,00

sponsor
PORSCHE MOBIL 1
SUPERCUP
2019



sponsor
WORLD
SUPERBIKE
2019



NEW PRODUCTION PLANT
A.M.T. S.R.L. - CASELLE T.SE - TORINO - ITALY



HEAD OFFICE
KINTEK S.R.L. - MAPPANO - TORINO - ITALY



MAIN PRODUCTION PLANT
KINTEK TOOLING KFT - BEKESCSABA - HUNGARY

KINTEK s.r.l.

Via Goretta 88/G - 10079 MAPPANO - (TO) - ITALY
Tel. +39 011 99 68 065 - Fax +39 011 99 65 662
e-mail: info@kintek.it
<http://www.kintek.it>